



Ministry of Housing,
Communities &
Local Government

Neighbourhood Profile: Blatchcombe & Blagdon

Local Authority: Torbay Council

March 2026

PRIDE IN PLACE
LED BY YOU – BACKED BY UK GOVERNMENT



About this document

This document, produced by MHCLG, presents high-level data to support the Pride in Place Programme. It is intended to support Neighbourhood Boards in both identifying and evidencing local needs or trends. It does not make policy recommendations.

Background

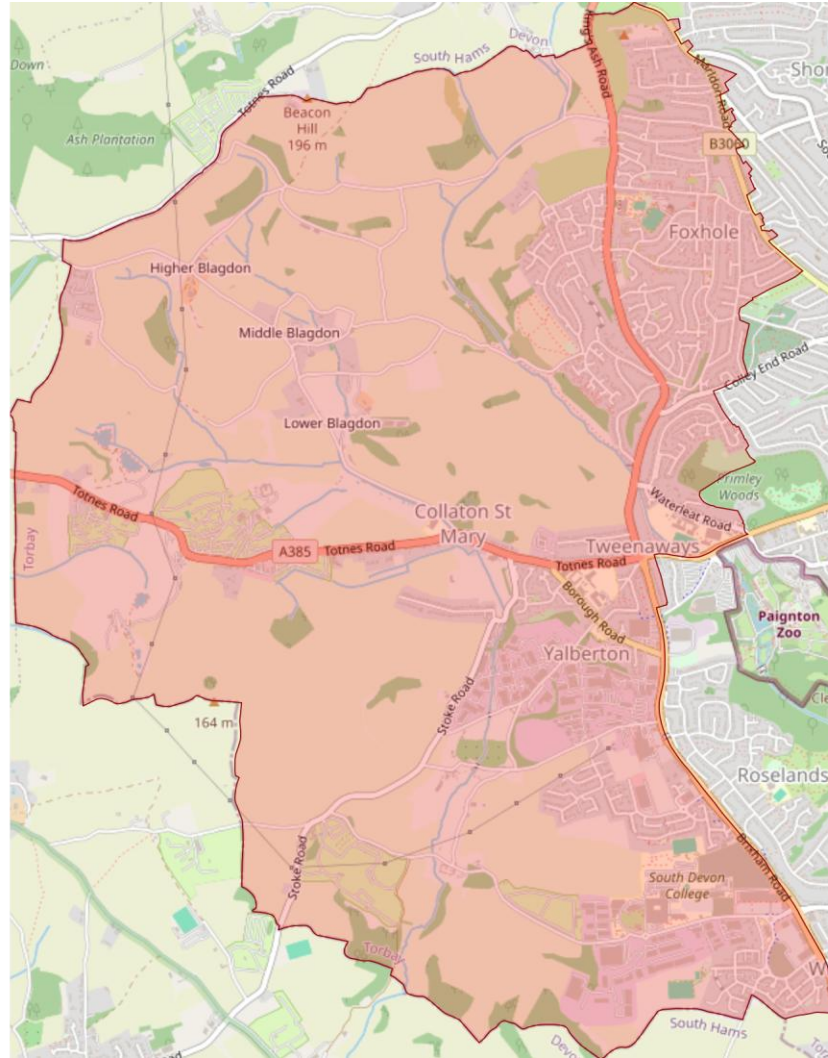
- The Pride in Place Programme will provide 284 communities across the UK with up to £20 million of funding over the next decade. This support will help local people shape the future of their neighbourhood and deliver real change across the country.
- Data is presented across broad themes that Neighbourhood Boards may consider addressing through the programme.
- These packs do not take account of the implementation of current national or local policy interventions.
- These data packs can be used as a support tool, alongside existing data insights available to Local Authorities and Boards.

Data caveats

- The data sources in this pack are the latest available as of 1st January 2026. The metrics in this pack do not account for any boundary request changes submitted by places.
- Data supply issues within the Greater Manchester area mean that crime data figures are missing for MSOAs that fall within this area.
- Lockdown restrictions and the furlough scheme were in place at the time Census 2021 was conducted, which significantly impacted 'travel to work methods' data. As such, the data are not reflective of current commuting patterns. We have therefore used Census Travel to work estimates using assumed pre-coronavirus travel behaviours- Office for National Statistics (June 2023).



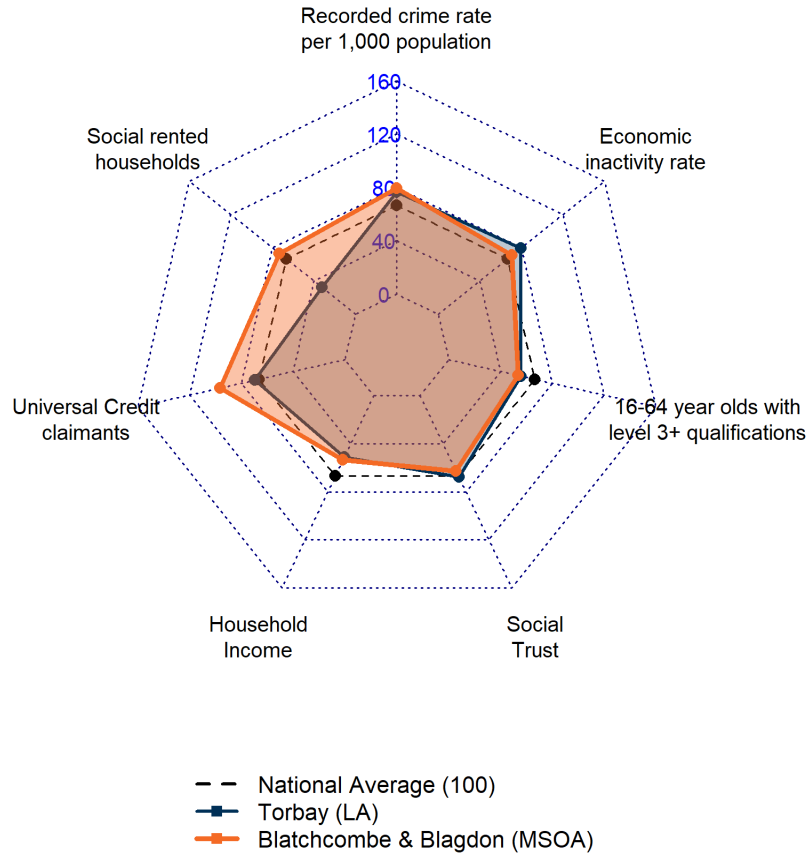
OFFICIAL
**Map showing the boundary and surrounding context of
Blatchcombe & Blagdon**



Contains OS data © Crown copyright 2026. OS Licence No. AC0000812160. © OpenStreetMap contributors



Overview of indicators



This radar chart compares the relative performance of Blatchcombe & Blagdon across seven key indicators against both the Torbay Local Authority average and the National baseline (set at 100). Values plotted outside the thick black national line indicate rates higher than the national average, while values inside indicate lower rates. Note that being above or below the baseline can be positive or negative depending on the indicator. For example, higher than average Universal Credit claimants represents a negative outcome, whereas higher than average household income represents a positive outcome.



Safety, Security and Cohesion

Recorded crime type per 1,000 population

Category	Blatchcombe & Blagdon	Torbay	National
Burglary	2.7	2.9	3.9
Criminal damage and arson	9.4	10.0	7.4
Drugs	4.2	4.9	3.6
Other crime	2.5	2.2	2.2
Other theft	7.1	7.9	7.0
Possession of weapons	1.5	1.2	1.0
Public order	6.3	6.4	7.0
Robbery	0.3	0.7	1.4
Shoplifting	6.9	9.3	8.6
Theft from the person	0.4	1.0	2.2
Vehicle crime	4.1	3.1	5.4
Violence and sexual offences	57.3	48.8	35.8

Headlines

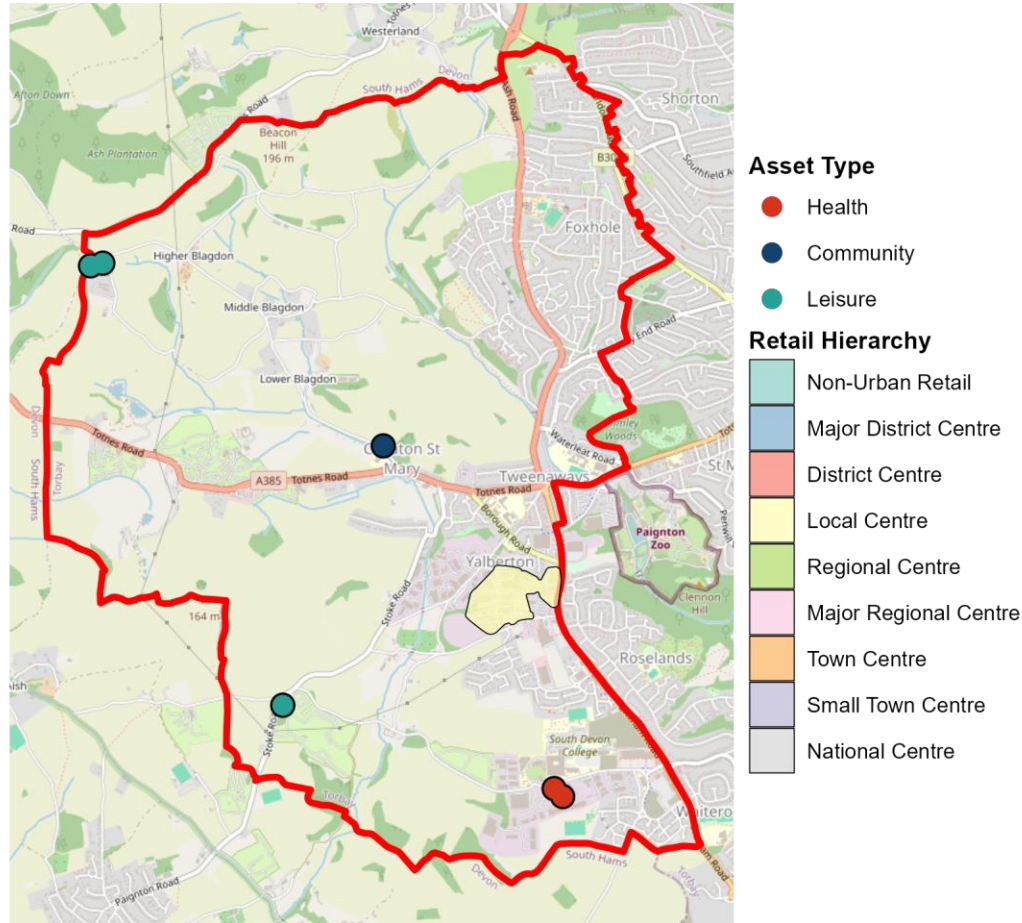
Crime rates in Blatchcombe & Blagdon are higher than the national average for 6 categories, specifically: Criminal damage and arson, Drugs, Other crime, Other theft, Possession of weapons and Violence and sexual offences. Compared to the local authority average (Torbay), this area sees higher rates of Other crime, Possession of weapons, Vehicle crime and Violence and sexual offences.

Category	Blatchcombe & Blagdon	Local Authority	National
Social Trust	-8.9	-1.2	-3.1

[Net social trust](#) is defined as the estimated proportion of people who say they generally trust others. According to Onward (2023), Blatchcombe & Blagdon has a social trust score of -8.9%, which is lower than the England average of -3%.

OFFICIAL High Streets and Community Assets in Blatchcombe & Blagdon

This map shows the location of specific community assets (Health, Community, and Leisure) and designated local retail centres in or near to Blatchcombe & Blagdon. If no icons or shaded areas are visible, no information was found in the source datasets for this area.



Contains OS data © Crown copyright 2026. OS Licence No. AC0000812160. © OpenStreetMap contributors

Map showing community assets and high streets in Blatchcombe & Blagdon



Transport and Connectivity in Blatchcombe & Blagdon

Headlines

Travel times to key services in Blatchcombe & Blagdon are strong, with access to Food Store, GP Surgery, Hospital being faster than national averages.

The most popular employment destination for residents in Blatchcombe & Blagdon is Paignton Central (Torbay) (17.8%), followed by Torquay Central (Torbay) (17.6%).

Commuter destinations

Rank	Destination	Number
1	Paignton Central (Torbay)	414
2	Torquay Central (Torbay)	409
3	Shiphay & the Willows (Torbay)	385
4	Totnes Town (South Hams)	299
5	Newton Abbot, Town Centre (Teignbridge)	217
6	Brixham Town (Torbay)	145
7	Dartmouth (South Hams)	135
8	Upton & Hele (Torbay)	126
9	Chelston, Cockington & Livermead (Torbay)	103
10	Marldon, Stoke Gabriel & Kingswear (South Hams)	97

Travel time to services (mins)

Service	Blatchcombe & Blagdon	Torbay	National
Employment (500+)	17.5	10.7	11.7
Food Store	6.8	6.6	7.1
Further Education	29.0	20.1	22.2
GP Surgery	11.0	13.3	13.3
Hospital	33.7	36.2	41.6
Primary School	9.5	8.8	9.1
Secondary School	16.5	18.1	18.5
Town Centre	18.7	15.4	20.8

Source: ONS Census (2021) Travel to Work estimates.



Education and Employment in Blatchcombe & Blagdon

Headlines

Residents in Blatchcombe & Blagdon with no formal qualifications (19.5%) are higher than the national average (18.1%). UC claimant rates (22.4%) are higher than national averages (15.4%) and above the wider Torbay rate (16.2%). The total economic inactivity rate is lower than the Torbay average.

Qualifications (16-64) (%)

Category	Blatchcombe & Blagdon	Torbay	National
Level 3 Qualifications or above	40.9	42.6	50.8
No Qualifications	19.5	19.8	18.1

Universal Credit Claimants (%)

Area	Value
Blatchcombe & Blagdon	22.4%
Torbay	16.2%
England	15.4%

Inactivity by reason (%)

Category	Blatchcombe & Blagdon	Torbay	National
Retired	21.9	30.3	21.5
Student	4.4	3.3	5.6
Looking after home or family	5.9	4.3	4.8
Long-term sick or disabled	6.7	5.9	4.1
Other	2.8	2.9	3.1
TOTAL INACTIVITY	41.6	46.7	39.1

Source: ONS Census (2021) and DWP (2024).

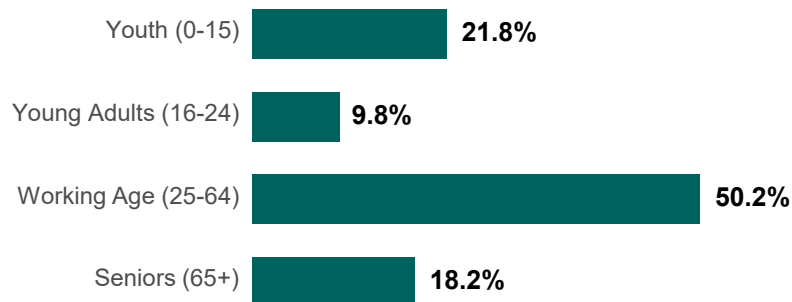


Health and Demographics in Blatchcombe & Blagdon

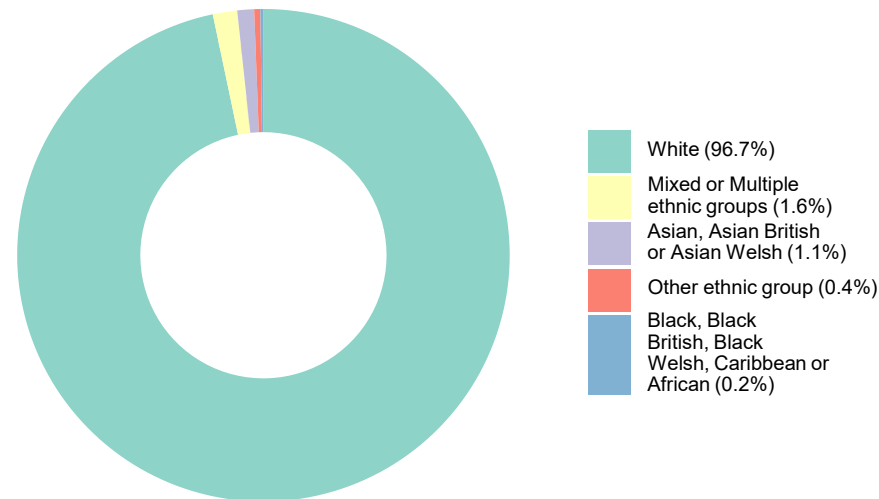
Demographics & Health Overview

The largest age group in Blatchcombe & Blagdon is Working Age (25-64) (50.2%). The most prominent ethnic group is White (96.7%). Overall, 78.5% of residents report having 'Very Good' or 'Good' health, which is lower than the national average of 82.2%.

Age Profile: Blatchcombe & Blagdon



Ethnicity Profile: Blatchcombe & Blagdon



General Health Profile (%)

Status	Blatchcombe & Blagdon	Torbay	National
Very Good	43.9	42.2	48.5
Good	34.6	34.2	33.7
Fair	14.7	16.2	12.7
Bad	5.3	5.7	4.0
Very Bad	1.6	1.7	1.2

Source: ONS Census (2021).

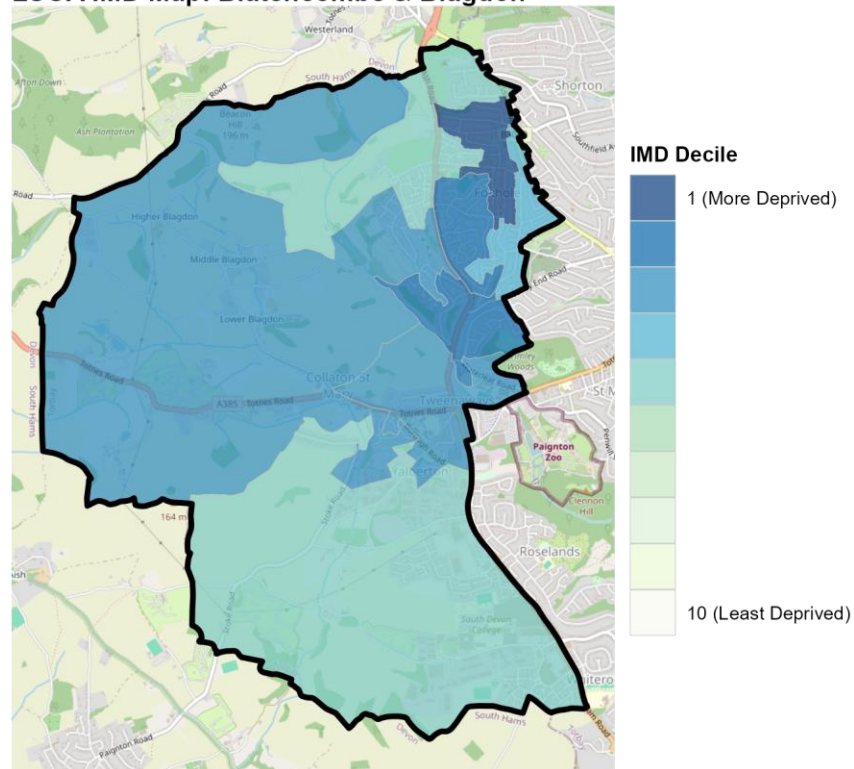


Deprivation Overview: Blatchcombe & Blagdon

Headlines

This area of Blatchcombe & Blagdon comprises 8 LSOAs. Overall, these fall into Decile(s) 1, 2, 3, 4 and 5. The area faces significant challenges in Employment and Education, Skills & Training and Health & Disability and Income.

LSOA IMD Map: Blatchcombe & Blagdon



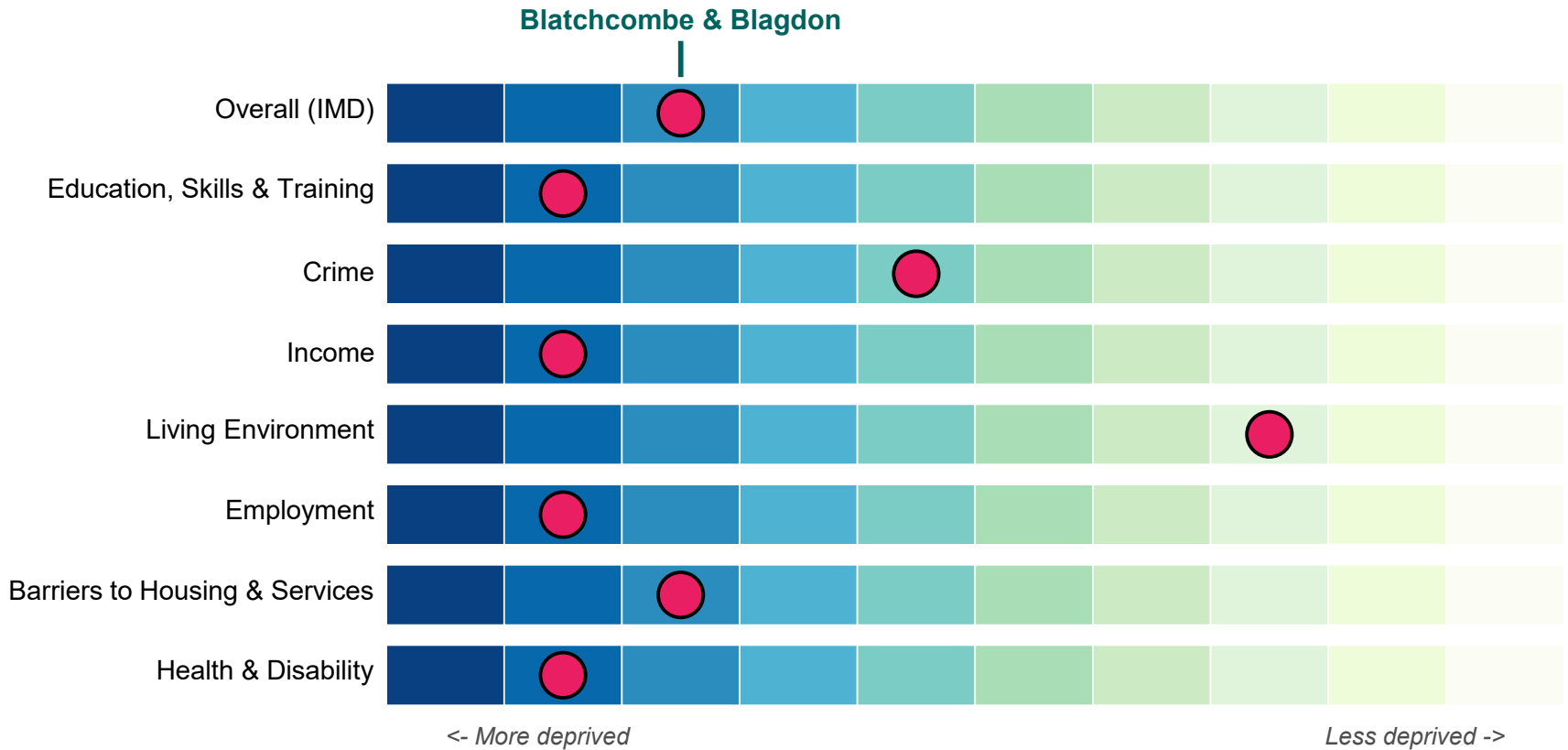
Source: MHCLG - Index of Multiple Deprivation (2025).



Deprivation Overview: Blatchcombe & Blagdon

Understanding the Chart

This chart illustrates the relative level of deprivation for Blatchcombe & Blagdon in comparison to all other MSOAs nationally. Scores range from 1 (most deprived) to 10 (least deprived) across various domains. These figures have been recalculated and population-weighted from the standard LSOA-level Index of Multiple Deprivation to provide an aggregated MSOA score.



Source: MHCLG - Index of Multiple Deprivation (2025).

OFFICIAL

Deprivation Domain Matrix: Blatchcombe & Blagdon

The table below details the specific decile ranking for each Output Area (OA - small neighbourhood) within Blatchcombe & Blagdon. The values represent the count of OAs falling into each decile.

Notably, within the 'Overall IMD' domain, 5 out of 40 Output Areas fall into the most deprived 10% nationally (Decile 1).

Decile	Overall IMD	Crime	Employment	Education, Skills & Training	Health	Income	Housing	Living Environment
1	5	5	5	5	5	5	0	0
2	10	0	14	14	14	5	5	0
3	9	0	10	11	10	15	11	0
4	5	5	5	5	11	15	10	5
5	11	15	6	5	0	0	5	9
6	0	9	0	0	0	0	9	5
7	0	6	0	0	0	0	0	0
8	0	0	0	0	0	0	0	5
9	0	0	0	0	0	0	0	5
10	0	0	0	0	0	0	0	11



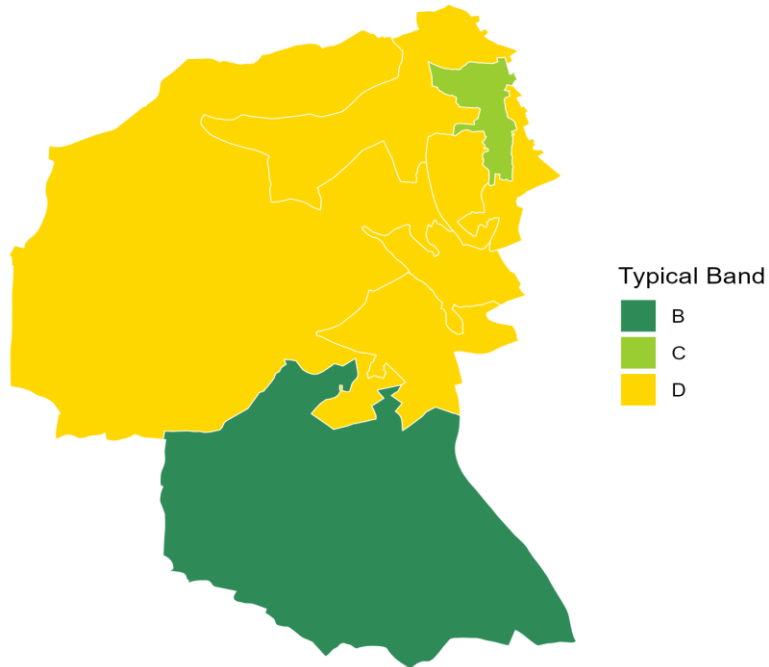
Housing: Quality and Age

Highlights

The maps below provide a granular view of the housing characteristics within the LSOAs of Blatchcombe & Blagdon. The map on the left displays the most common Energy Performance Certificate (EPC) rating, indicating energy efficiency. The map on the right illustrates the most common property age band, highlighting the historical development of the area.

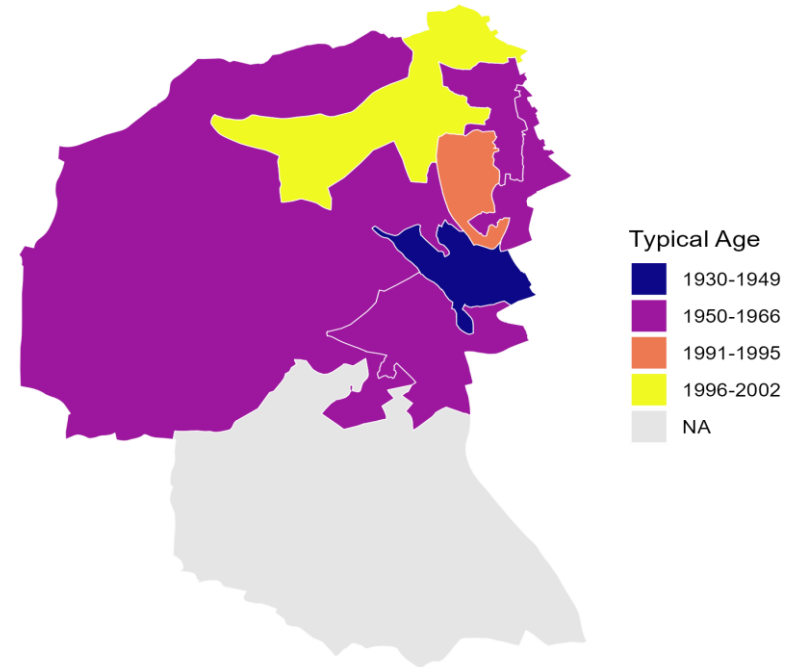
Most Common EPC Rating

Housing Quality (EPC)



Most Common Property Age

Typical Building Age



Source: MHCLG (2025), Office for National Statistics (2021).



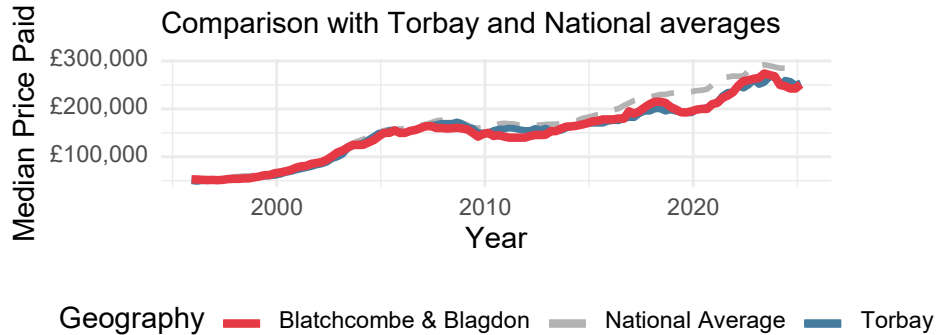
Housing Market Overview

Headlines

Housing is more affordable than the wider Local Authority, with an affordability ratio of 7.5 compared to 7.5. Over the observed period, local house price growth has lagged behind the Local Authority average (376% vs 409%).

Median House Price Trend

Median House Price Trend: Blatchcombe & Blagdon



Affordability Ratios

Geography	Disposable Net Income	Avg House Price	Affordability Ratio
National Average	£39,478	£290,250	7.4
Torbay	£33,267	£250,748	7.5
Blatchcombe & Blagdon	£35,302	£264,500	7.5

Housing Stock Summary (%)

Category	Blatchcombe & Blagdon	Torbay	National
Owned: Owns outright	32.3	39.2	32.5
Owned: Owns with a mortgage or loan	29.9	24.9	28.8
Shared ownership: Shared ownership	2.9	1.0	1.0
Social rented: Rents from council or Local Authority	2.5	0.9	8.3
Social rented: Other social rented	16.3	7.4	8.8
Private rented: Private landlord or letting agency	14.5	24.1	18.2
Private rented: Other private rented	1.6	2.5	2.2
Lives rent free	0.0	0.0	0.1

Source: Office for National Statistics (2025).